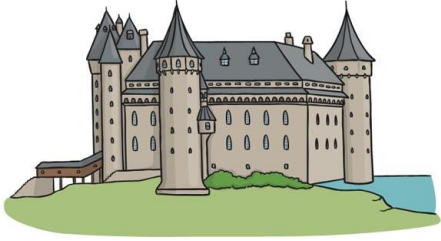


Suffix (for nouns): -dom



Meaning:
Place or state
of being

kingdom freedom stardom

Suffix (for nouns): -ist



Meaning:
person that
does something

scientist cyclist racist

Suffix (for nouns): -ness



Meaning:
A state of
being

kindness wellness nervousness

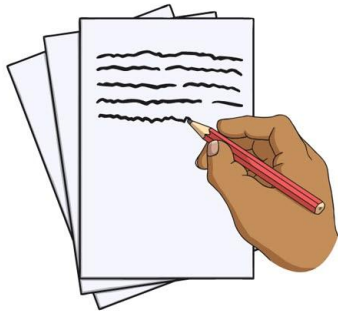
Suffix (for nouns): -ship



Meaning:
A position
held

friendship
dictatorship leadership

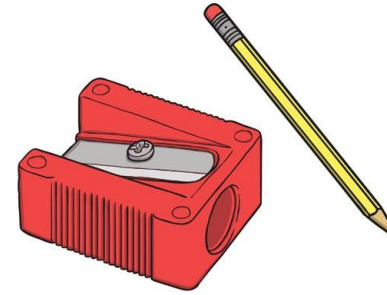
Suffix (for verbs): -ify, -fy



Meaning:
Make or
become

simpl**ify** rat**ify** satisf**fy**

Suffix (for verbs): -en



Meaning:
Become

shar**pen** streng**then** loos**en**

Suffix (for verbs): -ment



Meaning:
The action of

mov**ement**

disagre**ement** judg**ement**

Suffix (for adjectives): -able, -ible



Meaning:
Capable of
being

ed**ible** persu**able** collaps**ible**

Suffix (for adjectives): -esque



Meaning:
In the manner
of, resembling

pictures**esque** grotes**esque**

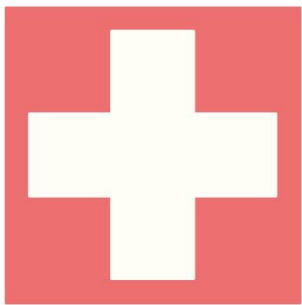
Suffix (for adjectives): -ful



Meaning:
Full of, known
for

hate**ful** care**ful** beauti**ful**

Suffix (for adjectives): -ical, -ic



Meaning:
Having the
character of

musi**cal** criti**cal** medi**cal**

Suffix (for adjectives): -ish



Meaning:
Having the
quality of

book**ish** child**ish** sheep**ish**

Suffix (for adjectives): -less



Meaning:
Without any

feare**less** care**less** talent**less**

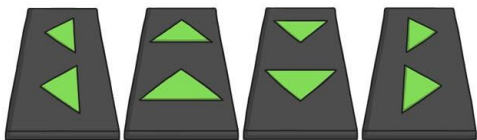
Suffix (for adjectives): -ous, -ious



Meaning:
Having the
qualities of

jeal**ous** mischiev**ous** fam**ous**

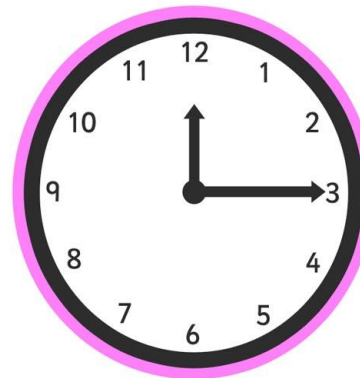
Suffix (for adverbs): -ward, -wards



Meaning:
Direction

back**wards** to**wards** in**wards**

Suffix (for adverbs): -wise



Meaning:
In relation to

clock**wise** lik**ewise** othe**rwise**